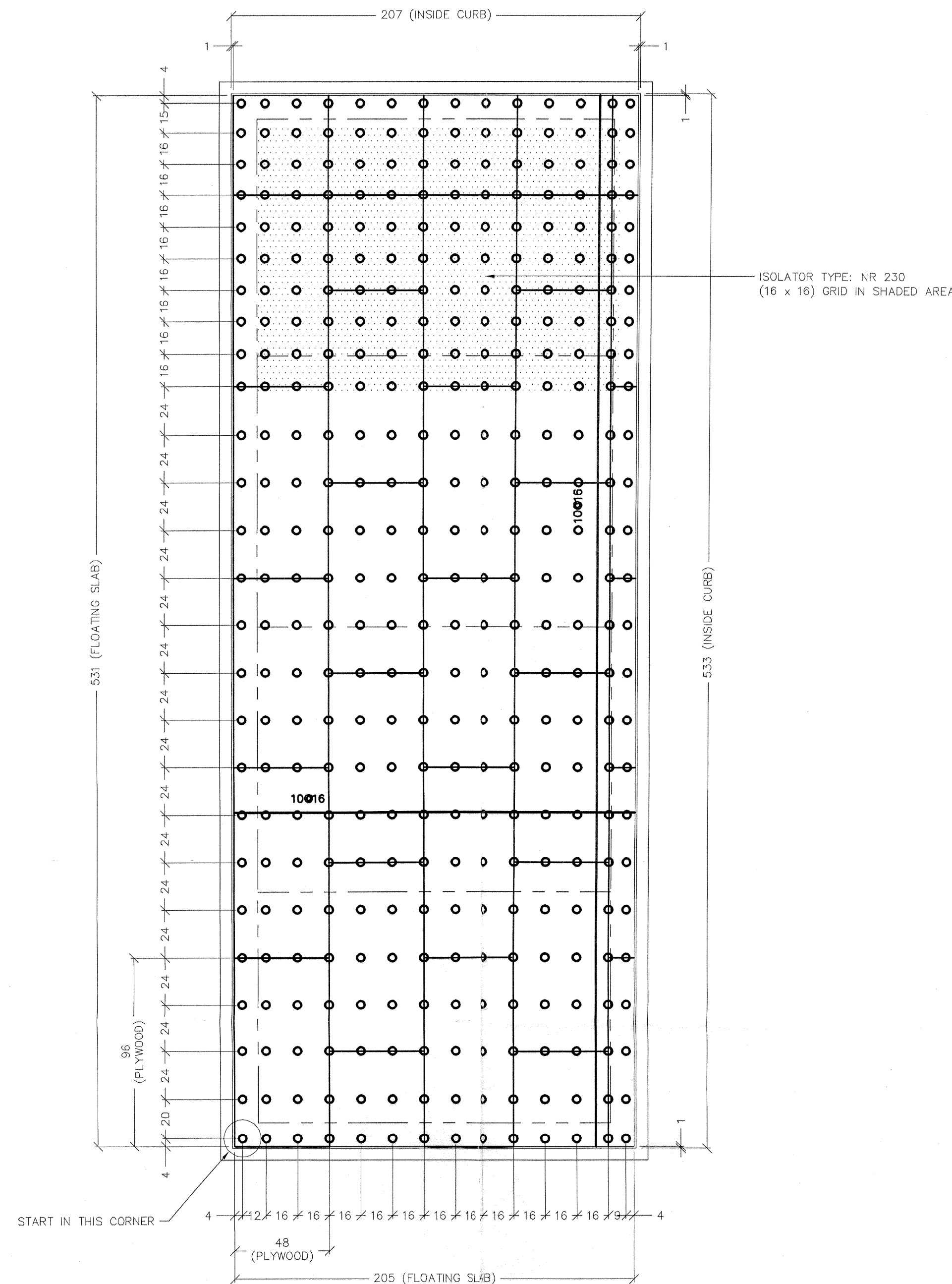


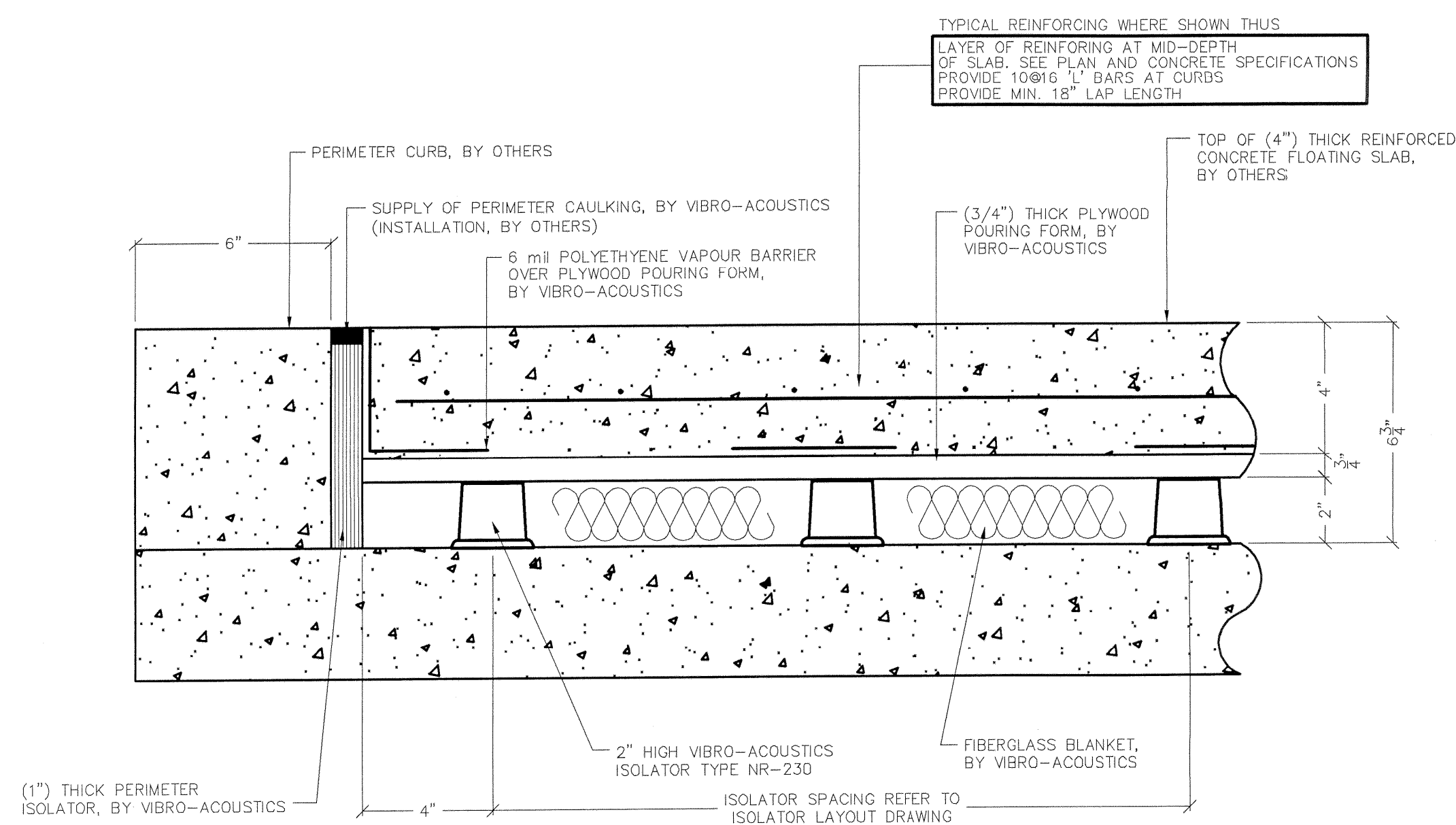
PLAN VIEW - AHU-E5

○ STANDARD LOAD ISOLATOR
TYPE NR-230

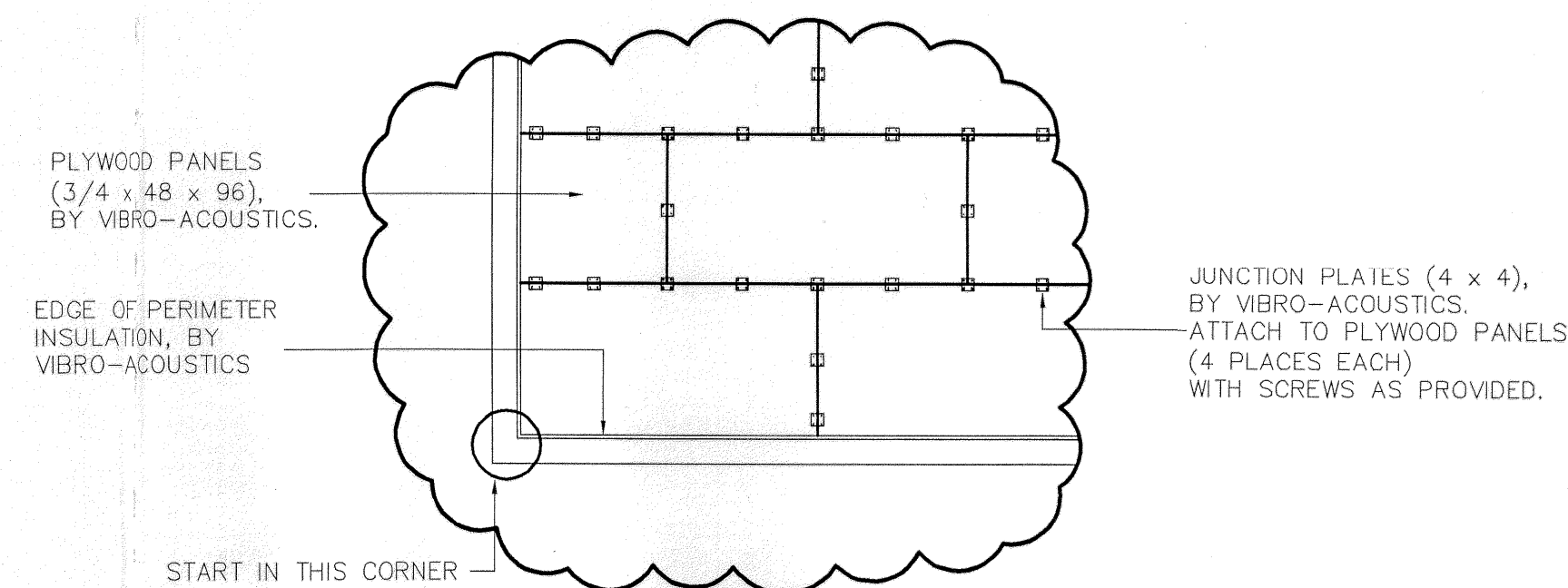
ISOLATOR LEGEND



PLAN VIEW - AHU-E5
PLYWOOD AND ISOLATOR LAYOUT



FLOATING FLOOR PERIMETER DETAIL



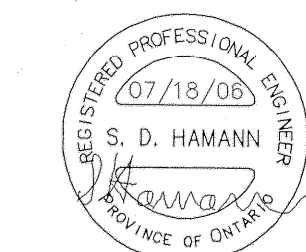
TYPICAL DETAIL AT JUNCTION PLATE INSTALLATION

CONCRETE SPECIFICATIONS

1. CAST-IN PLACE CONCRETE NOTES
 - 1.1 GENERAL
 - PROVIDE ALL LABOUR, MATERIALS, TOOLS AND EQUIPMENT REQUIRED TO CARRY OUT THE WORK.
 - 1.2 PROVIDE BROOM ROUGHENED FINISH ON FLOATING SLAB SURFACE TO RECEIVE HOUSE KEEPING PAD.
 - 1.3 ENSURE TEMPORARY PLUGS ON TOP OF ISOLATOR HOUSING REMAINS EXPOSED AFTER CONCRETE POUR.
- 1.2 PRODUCTS
 1. PORTLAND CEMENT, WATER AND AGGREGATES SHALL CONFORM TO ASTM C94.
 2. COARSE AGGREGATE: NORMAL EIGHT, MAX. SIZE 20mm.
 3. PROVIDE AN APPROVED WATER REDUCING ADDITIVE IN ALL CONCRETE.
 4. ADMIXTURES SHALL CONFORM TO ASTM C94 SERIES.
 5. REINFORCING STEEL, UNLESS SPECIFICALLY NOTED, SHALL BE DEFORMED BARS CONFORMING TO CSA G30.12M, GRADE 400 (58000psi).
 6. CURING AND SEALING COMPOUNDS WHERE APPROVED FOR USE TO CONFORM TO ASTM C309. GENERALLY, ALL CONCRETE SURFACES ARE TO BE SEALED UNLESS NOTED OTHERWISE. COMPOUNDS ARE TO BE COMPATIBLE WITH APPLIED FINISHES.
- 2.0 EXECUTION
 1. MINIMUM COMPRESSIVE STRENGTH FOR CONCRETE AT 28 DAYS SHALL BE AS NOTED ON THE DRAWINGS. SLUMP AT THE POINT OF DISCHARGE SHALL BE CONSISTENT AT 90mm (3.5").
 2. REINFORCE 4" FLOATING SLABS AS SHOWN ON PLAN. PROVIDE CLASS 'B' LAP SPLICE (18" MIN) WHERE REQUIRED.
 3. PROVIDE ADDITIONAL DIAGONAL BARS & ADDED BARS AT RE-ENTRANT CORNERS & SLAB PENETRATIONS AS NOTED ON PLAN.
 4. CHAIR BARS TO MAINTAIN 2" CONCRETE COVER. PROVIDE SUFFICIENT NO. OF CHAIRS TO MAINTAIN REINFORCEMENT LOCATION DURING PLACEMENT OF STEEL & CONCRETE.
- 3.0 DESIGN
 1. CONCRETE MEMBERS ARE DESIGNED IN ACCORDANCE WITH CSA STANDARD A23.3.
- 4.0 CONCRETE STRENGTH 25 MPa @ 28 DAYS. ALTERNATIVELY USE 35 MPa TO ACHIEVE 25 MPa AFTER 7 DAYS IF REQUIRED.

SUBMITTAL NOTES:

- 1) This drawing is submitted for: [] approval
[x] Records/Installation
- 2) This drawing must be returned marked "APPROVED" prior to release of any materials
- 3) Contractor to verify all dimensions and details
- 4) Vibro-Acoustics to supply the following:
 - i) Pouring form, exterior grade plywood 3/4 x 48 x 96
 - ii) 2" thick isolation pads
 - iii) Perimeter isolation, 1" thick semi-rigid board
 - iv) Fibreglass insulation blanket, 1 1/2" thick
 - v) Junction plates 4" x 4"
 - vi) Screws for attachment of junction plates
 - vii) Vapour barrier, 6 mil polyethylene sheet
 - viii) Concrete re-bar design
 - ix) Supervision of Installation of floating floor system
 - x) Supply of perimeter caulking
- 5) The following is not by Vibro-Acoustics:
 - i) Off loading, storage, and hoisting of materials
 - ii) Supply and installation of floor drains
 - iii) Installation of concrete reinforcing
 - iv) Pouring of concrete for floating slab



FOR SLAB REINFORCING ONLY

		PROJECT: KEC East Wing		Floating Floor For AHU-E5	
		CUSTOMER: Allied Technologies			
24 Oct 06	1	Released as installation drawing		JM	CONSULTANT: CMTA Engineering Consultants
DATE	NO.	REVISION	BY	PROJECT NO.: 9386	PROJECT MANAGER: Damon Jeboodhsingh
			DRAWN BY: JM		SCALE: 1/4" = 1'-0"
			CHECKED BY: [Signature]		DATE: 12 JUL 06
				DRAWING NO.: 804931	
				REVISION NO.: 1	

Vibro-Acoustics®