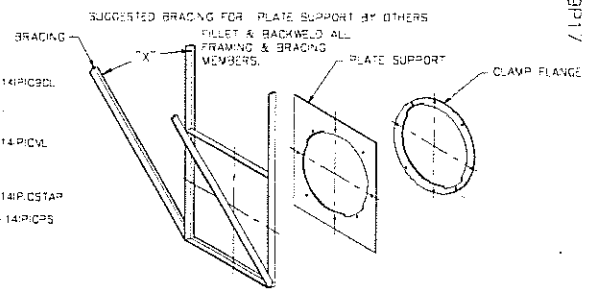
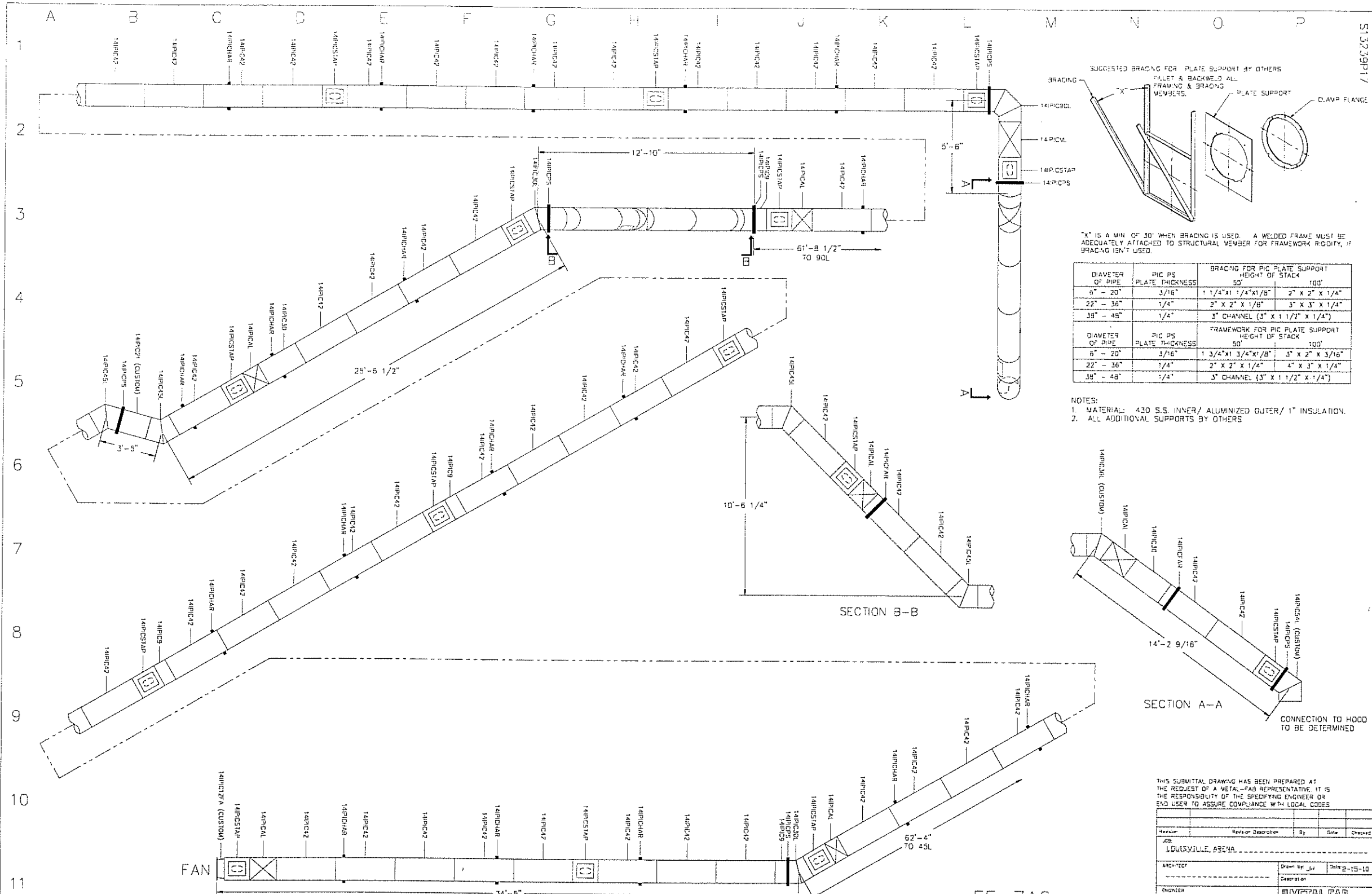


S13239P17



X IS A MIN OF 30" WHEN BRACING IS USED. A WELDED FRAME MUST BE ADEQUATELY ATTACHED TO STRUCTURAL MEMBER FOR FRAMEWORK RIGIDITY, IF BRACING ISN'T USED.

DIAMETER OF PIPE	PIC PS PLATE THICKNESS	BRACING FOR PIC PLATE SUPPORT	HEIGHT OF STACK
6" - 20"	3/16"	1 1/4" x 1 1/4" x 1/8"	2" x 2" x 1/4"
22" - 36"	1/4"	2" x 2" x 1/8"	3" x 3" x 1/4"
38" - 48"	1/4"	3" CHANNEL (3" x 1 1/2" x 1/4")	

DIAMETER OF PIPE	PIC PS PLATE THICKNESS	FRAMEWORK FOR PIC PLATE SUPPORT	HEIGHT OF STACK
6" - 20"	3/16"	1 3/4" x 1 3/4" x 1/8"	3" x 2" x 3/16"
22" - 36"	1/4"	2" x 2" x 1/4"	4" x 3" x 1/4"
38" - 48"	1/4"	3" CHANNEL (3" x 1 1/2" x 1/4")	

NOTES:
 1. MATERIAL: 430 S.S. INNER/ ALUMINIZED OUTER/ 1" INSULATION.
 2. ALL ADDITIONAL SUPPORTS BY OTHERS

SECTION B-B

SECTION A-A

CONNECTION TO HOOD TO BE DETERMINED

THIS SUBMITTAL DRAWING HAS BEEN PREPARED AT THE REQUEST OF A METAL-FAB REPRESENTATIVE. IT IS THE RESPONSIBILITY OF THE SPECIFYING ENGINEER OR END USER TO ASSURE COMPLIANCE WITH LOCAL CODES

Revision	Description	By	Date	Checked

JOB: LOUISVILLE ARENA

ARCHITECT	Drawn By: JLV	Date: 01-05-10
ENGINEER	Description:	
CONTRACTOR		

EF-7A6

DR # 3	REVIEWED & APPROVED BY
DWG # S13239P17	ENGINEER:
SCALE: 3/16"=1'	CONTRACTOR: